

LGMG

H735

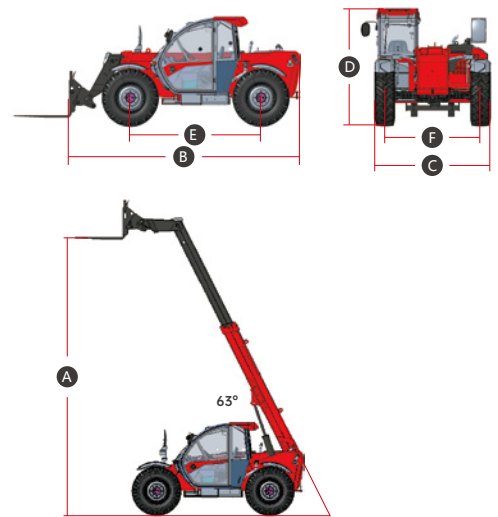
TECHNICAL DATA SHEET



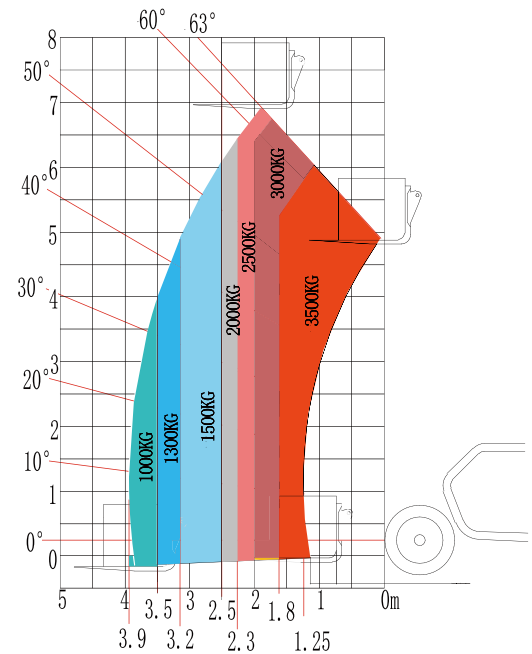
LGMG Telehandler

SPECIFICATIONS

Models	H735
Measurements	Metric
Ⓐ Max. Lifting Height	7m
Max. Outreach	3.9m
Ⓑ Overall Length	5.02m
Ⓒ Overall Width	2.33m
Ⓓ Overall Height	2.38m
Ⓔ Wheelbase	2.85m
Ⓕ Wheel Track	1.93m
Ground Clearance	0.42m
Productivity	
Max. Capacity	3500kg
Gradeability-Unladen	45%
Min. Turning Radius	3.9m
Drive /Steering Mode	4 Wheel Drive / 4 Wheel Steer
Primary Boom Ascending Time	9.9s
Primary Boom DescendingTime	7.8s
Boom Extending Time	8.9s
Boom Retracting Time	8.4s
Forward - First Gear Travel Speed	5km/h
Forward - Second Gear Travel Speed	29km/h
Backward - First Gear Travel Speed	5km/h
Backward - Second Gear Travel Speed	29km/h
Braking	Multiple-disk brake with oil bath on front and rear axles
Max. Braking Distance-Unladen	≤3m (20km/h)
Standard Tyres	400/80R24
Engine	
Manufacturer	Kubota
Model	V3307-DI-T-E3B
Laden drawbar pull	4600daN
Rated Power	54.6kw
Max. Power	54.6kw
Max. Torque	261.1N.m
Displacement	3331ml
Tank Capacities	
Hydraulic Pump	Piston type, 99 l/min
Hydraulic Oil Capacity	75L
Fuel Tank Capacity	100L
Weight	
Machine Weight	7000kg



Rough terrain load chart
Standard EN1459 B



Please contact LGMG or a local dealer for more details.

LGMG reserves the right to change technical data without prior notice. All photos and pictures in this brochure are for promotional purposes only.

This brochure comes into effect in May, 2023.

LINGONG HEAVY MACHINERY CO., LTD.

Address: No. 2676, Kejia Road, Jinan, Shandong, China

Email: sales@lgmg.com.cn Tel: +86 531 6787 9283

www.lgmglifts.com



RELIABILITY IN ACTION