

CISOLIFT

CH8826

Telehandler

The Cisolift CH8826 is a powerful and versatile telehandler, built to meet the demands of job sites requiring optimal lifting height and high load capacity.

- 4-wheel drive with 3 steering modes
- Urea-free emissions system
- Hydrostatic transmission for smooth and efficient operation
- Ergonomic cab offering superior comfort and visibility
- High lifting capacity suited for heavy-duty work



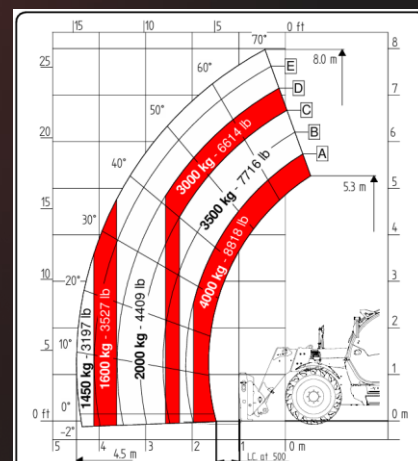


CISOLIFT

CH8826

Telehandler

Designed in Canada. Made in Italy.



TECHNICAL FEATURES

Lifting height	26'3"	8 m
Turning radius	13'8"	4,15 m
Lifting capacity	4 000 kg	8 818 lb
Length	17'	5 179 mm
Width	7'7"	2 310 mm
Height	8'	2 450 mm
Width with stabilizers	Diesel	

Transmission	Hydrostatic single gear	
Speed	25 km/h	
Engine Stage V	Deutz 75 hp	
Tires	400/70 20	
Emissions treatment system	Sans urée	
Energy source	120 l	
Weight	8 620 kg	19 003 lb